

JAMES BRIDGE

presents



7951 LARKVALE RD.

SAANICHTON, BC

HOLMES

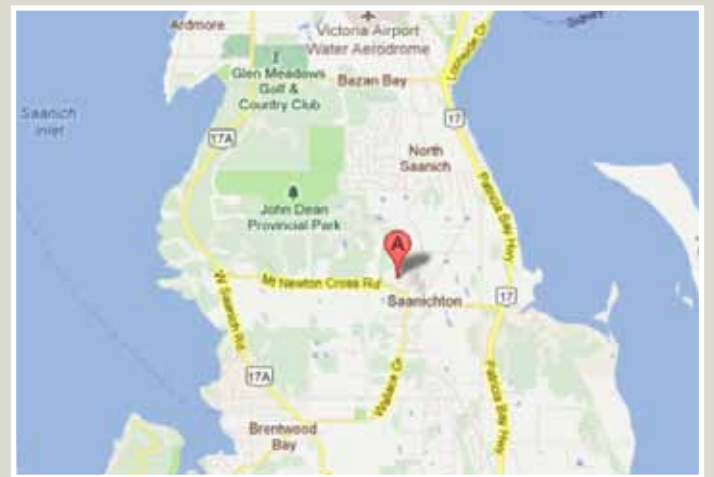


Phone: 250 656 0911

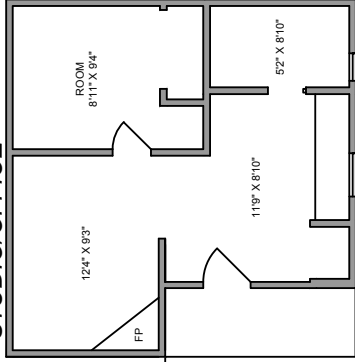
Fax: 250 656 2435

Toll Free: 1 877 656 0911

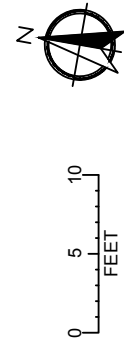
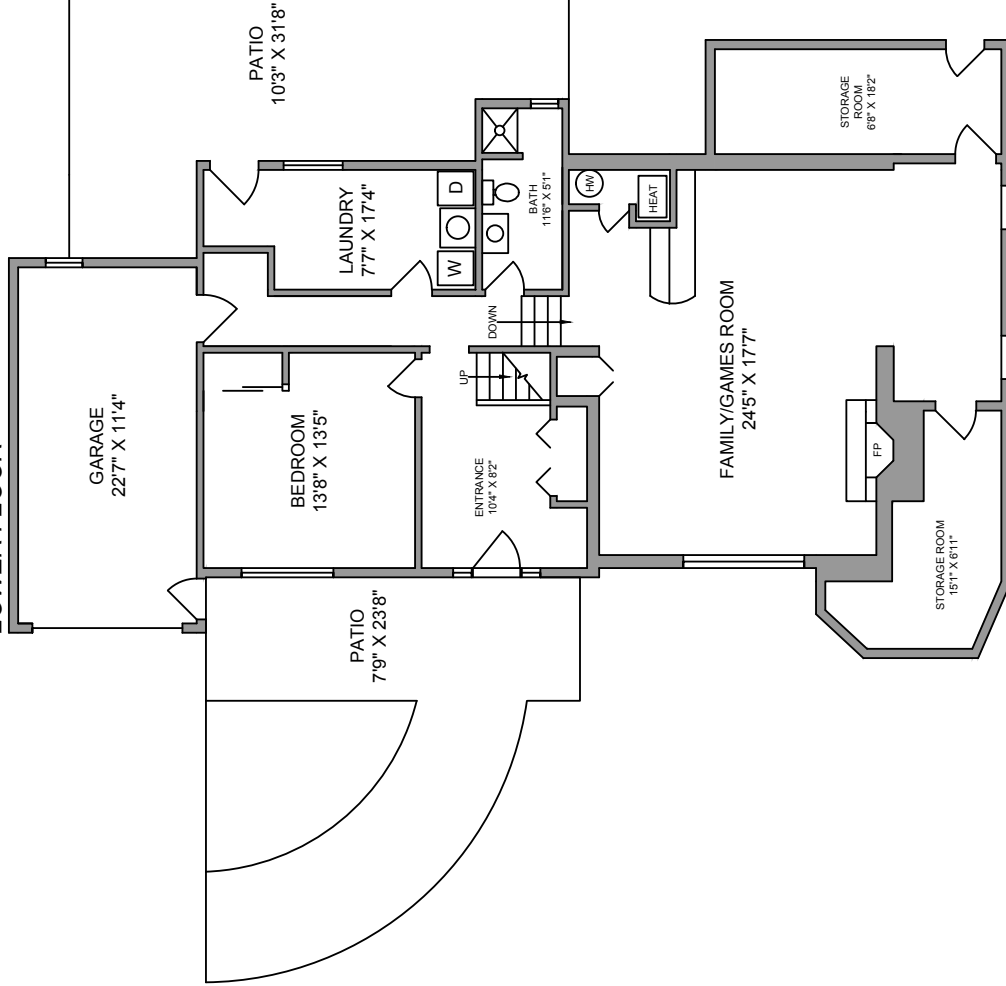
7951 LARKVALE RD, SAANICHTON



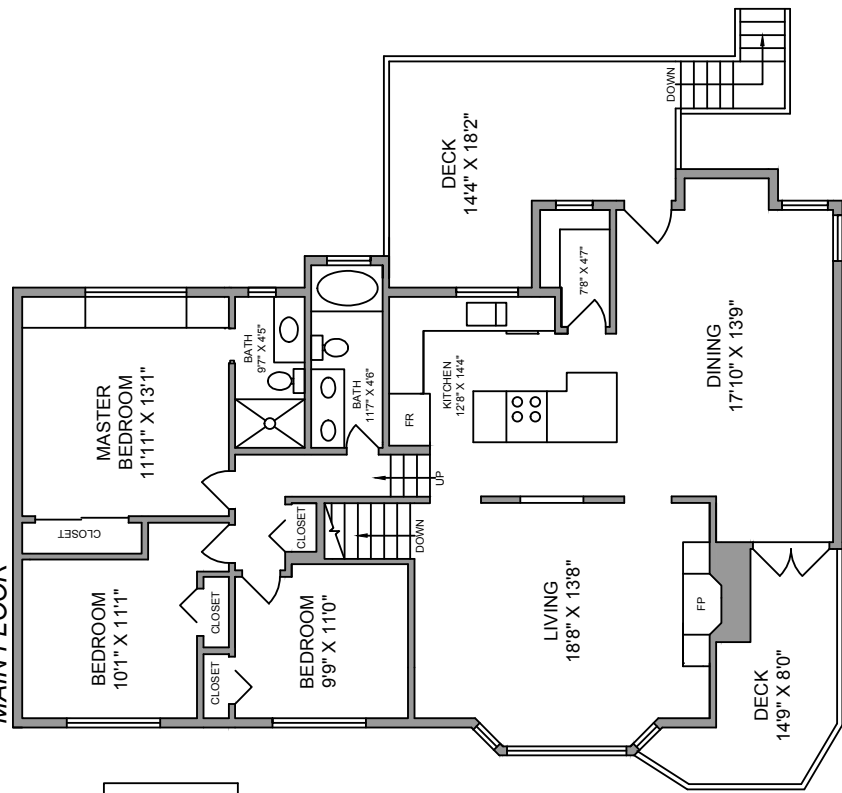
STUDIO/OFFICE



LOWER FLOOR



MAIN FLOOR



7951 LARKVALE ROAD, SAANICHTON
 PREPARED FOR THE EXCLUSIVE USE
 OF JAMES BRIDGE
 MEASURED ON: JANUARY 13, 2012
 FOR INFORMATION USE ONLY. MEASUREMENTS ARE APPROXIMATE.
 IF CRITICAL BUYER TO VERIFY

FLOOR	AREA SQUARE FOOTAGE				
	FINISHED	UNFINISHED	STUDIO	GARAGE	PATIO/DECK
MAIN	1480	0	0	0	320
LOWER	1265	260	430	275	660
TOTAL	2755	260	430	275	980

PHOTOPLAN
 REALTY PHOTOS & FLOOR PLANS
 info@photoplan.ca | www.photoplan.ca
 250.298.6139

7951 LARKVALE RD

Saanichton, BC



Enjoy this million dollar view EVERY-DAY! This beautiful Saanichton residence with its stunning views from the livingroom, kitchen, dining, familyrooms and bedrooms gives you the feeling of being on a mountain, yet you are in walking distance to all the amenities of Saanichton and on a very quiet road.

This superb home is 2755 sq. ft. boasts hardwood and heated tile floors, 4 bdrms, 3 bthrms, granite

kitchen, stainless appliances, 2 family rooms, 2 fireplaces, and even a separate studio/office. Well landscaped yard with underground sprinklers. and great privacy.

Listed at \$785,000

View web tour:
<http://www.photoplan.ca/344>



Phone: 250 656 0911

Fax: 250 656 2435

Toll Free: 1 877 656 0911

